

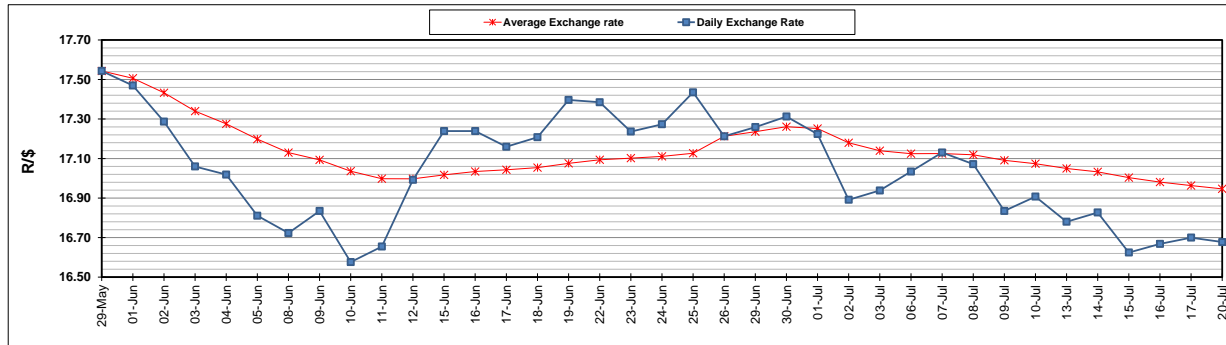
	PETROL 95 ULP	PETROL 93 ULP & LRP	DIESEL 0.05%	DIESEL 0.005%	ILL. PAR.
GAUTENG PUMP PRICE (SA c/l) AS FROM 01/07/2020	1,512.000	1,483.000	-	-	-
WHOLESALE PRICE (SA c/l) AS FROM 01/07/2020	-	-	1,303.560	1,307.960	703.828
SINGLE NATIONAL MAXIMUM RETAIL PRICE	-	-	-	-	882.000
BASIC FUEL PRICE - 20/07/2020 (SA c/l)	533.312	522.585	571.344	576.135	512.134
PRESS RELEASE CONTRIBUTION TO BFP 01/07/2020 - 20/07/2020 (SA c/l)	564.770	545.770	552.630	557.030	499.128
UNIT OVER/(UNDER) RECOVERY - 20/07/2020 (SA c/l)	31.458	23.185	(18.714)	(19.105)	(13.006)
AVERAGE BASIC FUEL PRICE 26/06/2020 - 20/07/2020	554.728	540.308	579.114	583.560	512.889
AVERAGE UNIT OVER/(UNDER) RECOVERY 26/06/2020 - 20/07/2020	(20.311)	(23.302)	(57.014)	(56.354)	(51.526)

### ANALYSIS MOVEMENT OF AVERAGE OVER/(UNDER) RECOVERY

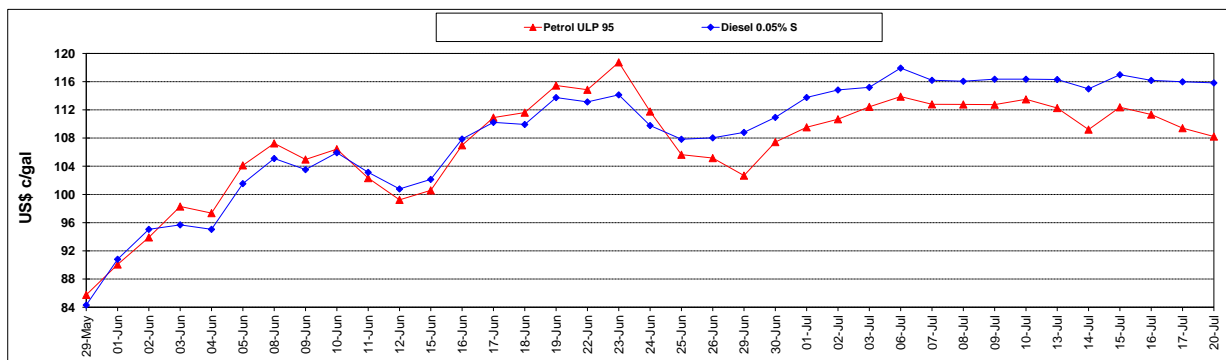
	PETROL 95	PETROL 93	DIESEL 0.05%	DIESEL 0.005%	ILL. PAR.
- MOVEMENT IN INTERNATIONAL PRODUCT PRICES	(26.219)	(29.058)	(63.181)	(62.570)	(56.989)
- MOVEMENT IN EXCHANGE RATE	5.908	5.755	6.168	6.216	5.463
AVERAGE UNIT OVER/(UNDER) RECOVERY 26/06/2020 - 20/07/2020	(20.311)	(23.302)	(57.014)	(56.354)	(51.526)

### R/\$ EXCHANGE RATE - (R/\$16.6775 - 20/07/2020)

#### EXCHANGE RATE USED IN BASIC FUEL PRICE



#### INTERNATIONAL PRODUCT PRICES OF BASKET USED IN BASIC FUEL PRICE



#### BASIC FUEL PRICE IN SA CENTS PER LITRE

